

BYLAW NO. 20 -2006

A BYLAW OF THE CITY OF LLOYDMINSTER IN
THE PROVINCES OF SASKATCHEWAN AND
ALBERTA TO AMEND BYLAW NO. 12-2001,
BEING THE "ZONING BYLAW OF THE CITY OF
LLOYDMINSTER".

THE COUNCIL OF THE CITY OF LLOYDMINSTER in the Provinces of Saskatchewan and Alberta enacts as follows:

That Bylaw No. 12-2001, entitled "The Zoning Bylaw of the City of Lloydminster ", is hereby amended in the manner set forth:

1. The Zoning Map being Schedule "D' to Bylaw No. 12-2001 is amended to incorporate the following change as to Zone:

All that Portion of Land containing approximately 7.34 ha in part of Parcel A, Plan 101694753 within the SW ¼, Sec. 26, Twp. 49, Rge. 28, W3M and part of SW ¼, Sec. 26, Twp. 49, Rge. 28, W3M (Wallacefield Phase 4 Stage 3) as outlined in schedule "A" attached hereto and forming a Part of this Bylaw is rezoned from:

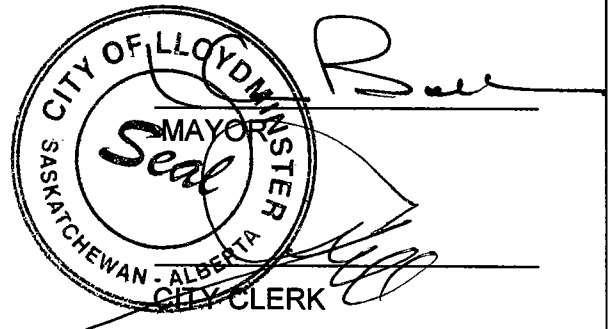
**RR - Residential Reserve to
R1- Single Detached Residential and PR - Parks & Recreation.**

This Bylaw shall come into force and effect upon the final passing thereof.

INTRODUCED AND READ a first time this 4th day of July 2006, A.D.

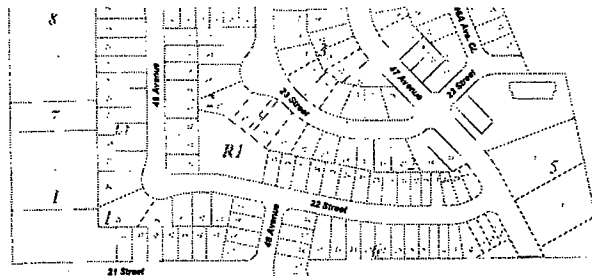
READ a second time this 4th day of July 2006, A.D.

READ a third time this 21st day of August 2006, A.D.

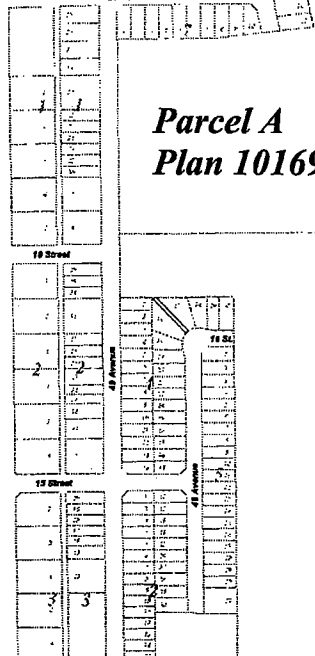


SCHEDULE " A " ATTACHED TO

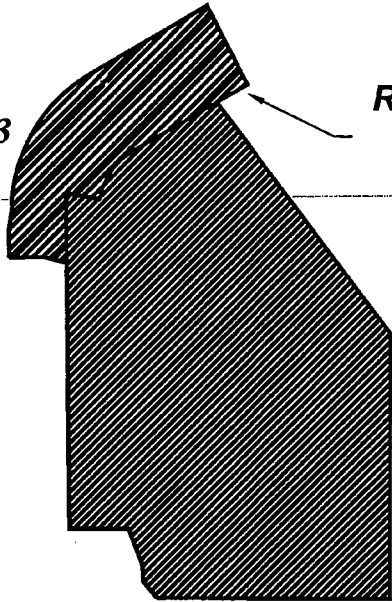
BYLAW NO. 20-2006



NW 1/4 26-49-28-w3



Parcel A
Plan 101694753



**Rezone from
RR to R1**

**Rezone from
RR to PR**

SW 1/4 26-49-28-w3

